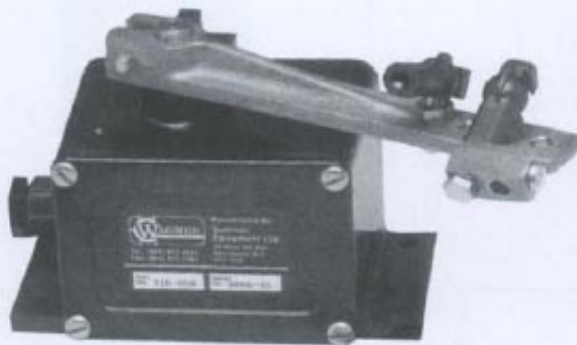




Hydraulic Steering

150 RUDDER ANGLE INDICATOR



Wagner Model 150 rudder angle indicators show the position of your rudders continuously and accurately, and if required from multiple stations.

■ **Easy to Read**

The large 3" (76mm) diameter indicator has easy to read calibrations and pointer set against a matte black background. Red and green arcs clearly identify port and starboard rudder angle. Because the pointer moves in the same manner as the rudder, it shows the precise rudder angle on the indicator dial. The indicator is fitted with internal indirect illumination. An optional remote dimmer allows the operator to select a comfortable level of brightness.

■ **Economical**

The Wagner Model 150 System draws less current than a pilot light and may be run off any boat's DC current supply from 12 to 40 volts.

■ **Reliable**

Solid state circuitry maintains accurate calibration throughout any voltage variation.

■ **Multiple Stations**

Up to 6 stations, including the master station, may be used by simply connecting them in series.

■ **Easy to Install**

The model 150 indicator is enclosed in a standard SAE housing. The master station comes complete with 16ft. (5m) of prewired cable and the extra station comes complete with 32ft. (10m) of cable. The front face of the indicator is completely watertight.

■ **Optional Mountings**

The standard flush mount is suitable for use in consoles or pedestals in protected areas. An optional bezel ring provides the perfect finish for a through dash panel mounting. For exposed locations a completely waterproof mount is available.

DEPENDABILITY AND PERFORMANCE

Over five decades of quality performance has made Wagner Hydraulic Steering equipment the standard for dependability and performance.

Wagner products are manufactured by Summer Equipment Ltd. of Vancouver, Canada, a company with over seven decades of experience in the marine field.

Remove the guess work when manoeuvring or docking with this good quality, inexpensive accessory.

Specifications - Model 150 Indicator

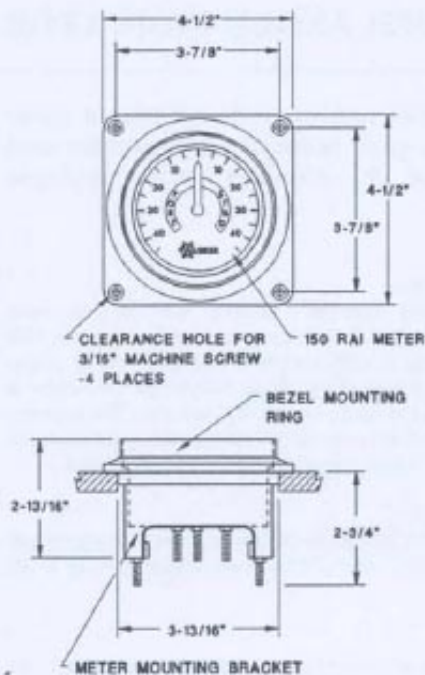
Input Voltage: 10-40VDC

Housing: Reinforced plastic

Weight: Master Meter .57 kg (1.25lbs)

Extra station .68 kg (1.5lbs)

Multiple meters: Master meter supports up to five extra stations.



Waterproof Kit

This kit is completely waterproof and ideal for mounting in exposed locations.



ACCESSORIES

The Universal Follow-up

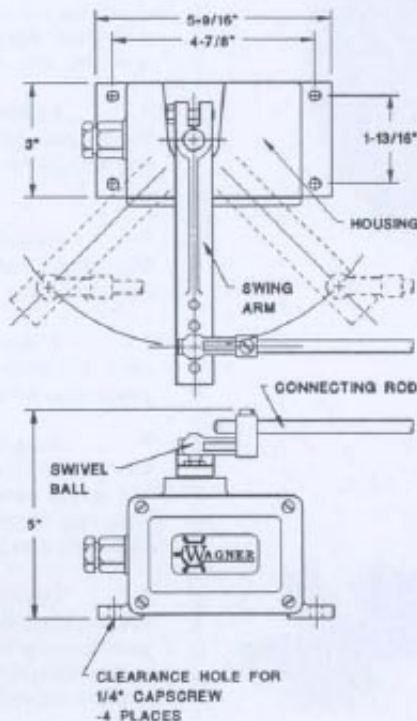
This completely watertight transmitter contains an infinite resolution sensing device rated at 20 million operations, providing extremely long life even under high vibration conditions. The slightest movement of the rudder generates an electrical signal which causes an accurate, proportional movement of the indicator(s). This unit must be mechanically linked to the rudder stock. It comes complete with 15m (50ft.) of pre-wired cable, a brass linkage rod and a set of swivels.

Specifications:

Input Voltage: 10-40 VDC

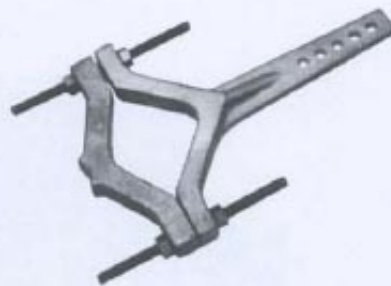
Housing: Watertight, re-inforced plastic

Weight: 1.6 kg (3.5 lbs)



Universal Rudder Stock Clamp

This brass clamp fits rudder stocks up to 115mm (4.5 in) maximum diameter. The lever of the of the Universal Follow-up is mechanically linked to this clamp to provide rudder feedback to the system. A series of connection points are predrilled in the clamp arm for various rudder angles.



Remote Dimmer Control

This control serves to dim the meter illumination of the 150 Rudder Angle Indicator.

If a dimmer switch is fitted, please specify voltage required; 12V, 24V or 32V.



Wagner Engineering Ltd.
135 Riverside Dr.
North Vancouver, BC
Canada V7H 1T6
Tel. (604) 988-1111
Fax (604) 986-0334
e-mail sales@wagnerengineering.ca
web site www.wagnerengineering.ca

ISSUE DATE: SEPT. 1994

P/N 191-0033