

TABLE 1

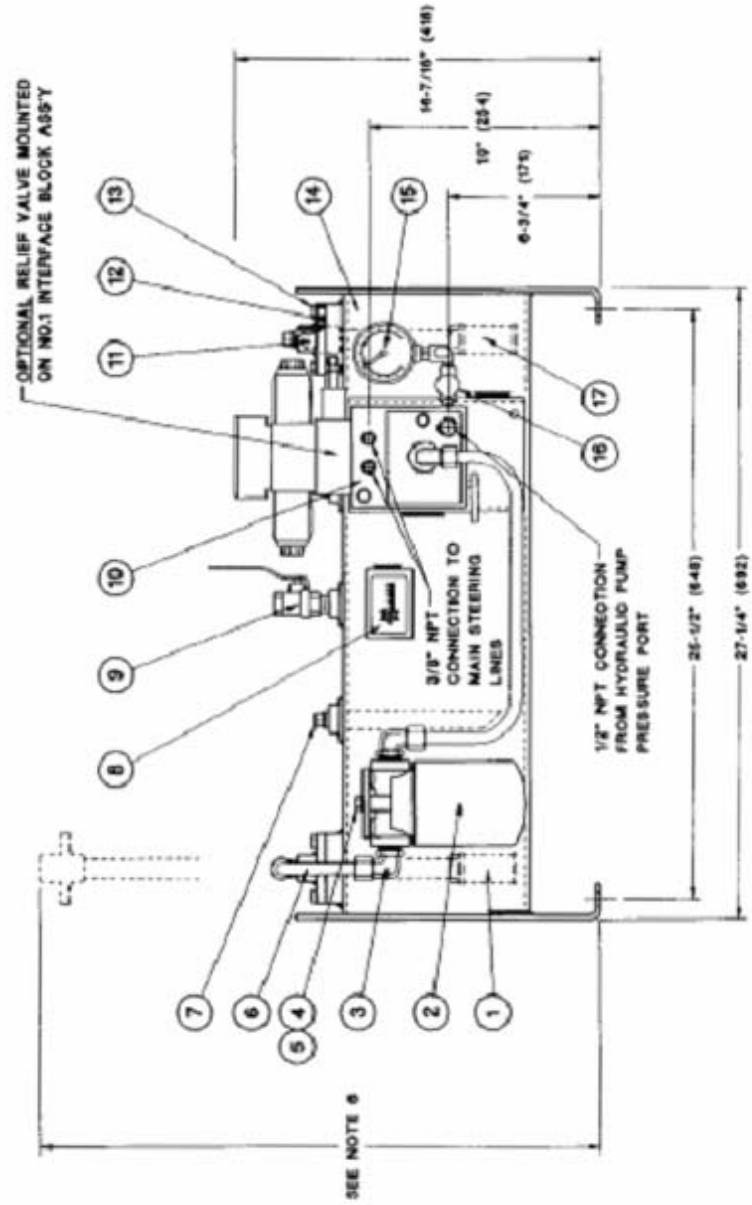
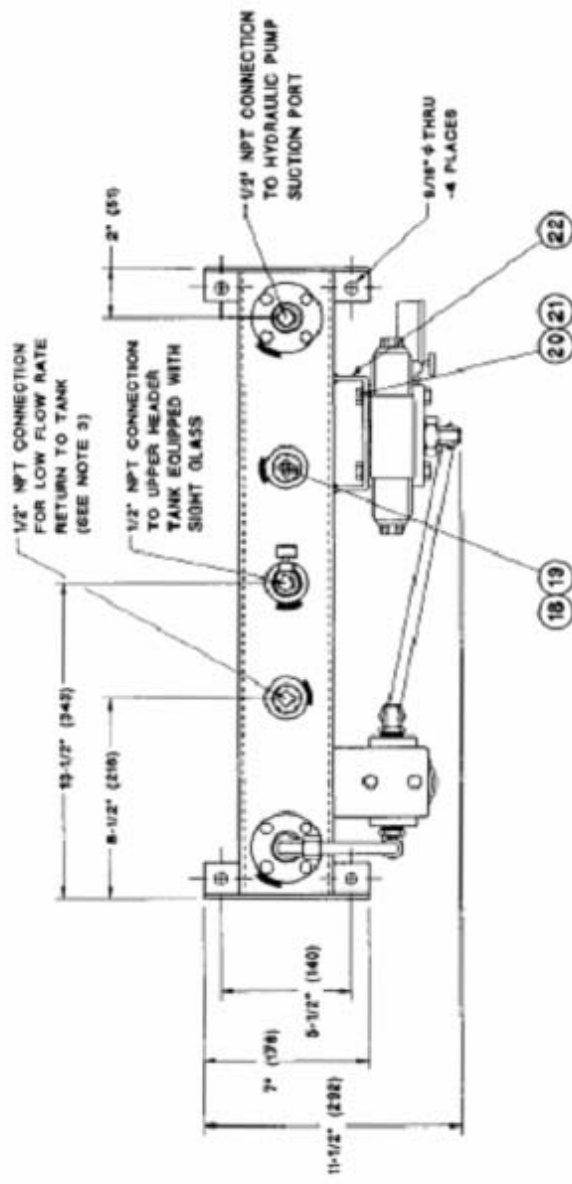
ITEM	QTY	PART NO.	DESCRIPTION
1	1	80-510085	RETURN LINE DEFUSER
2	1	80-510086	RETURN LINE FILTER
3	4	41-320020	ELBOW FITTING
4	2	51-215155	CAPSCREW
5	2	51-430001	LOCKWASHER
6	AR	5-200011	HYDRAULIC TUBING
7	1	41-130001	SQUARE HEAD PIPE PLUG
8	1	81-703037	LABEL
9	1	80-780017	SHUT-OFF VALVE
10	1	TABLE 2	NO.1 INTERFACE BLOCK ASSEMBLY
11	2	202-9211	MOUNTING PLATE WITH COUPLING
12	2	11-106101	O-RING
13	6	51-210013	CAPSCREW
14	1	201-0092	SEALED HYDRAULIC RESERVOIR
15	1	80-500001	PRESSURE GAUGE
16	1	80-780001	SHUT-OFF VALVE
17	1	80-510044	SUCTION STRAINER
18	1	720-0014	BLEED FITTING
19	1	202-0082	BLEEDER/VENT PLUG
20	2	81-210030	CAPSCREW
21	2	51-430004	LOCKWASHER
22	1	202-0085	INTERFACE BLOCK MOUNTING BRACKET

TABLE 2

RESERVOIR ASSY P.N.	NO.1 INTERFACE P.N.	SOLENOID VOLTAGE
200-0376	40-0-0115	12 VDC
200-0377	40-0-0118	24 VDC
200-0378	40-0-0117	32 VDC
200-0279	40-0-0181	110 VAC

NOTES:

1. ALL DIMENSIONS ARE IN INCHES (MM).
2. THE RESERVOIR ASSEMBLY WEIGHT IS 70 LB (32 KG) DRY.
3. THE LOW FLOW RETURN PORT IS INTENDED FOR HYDRAULIC PUMPS EQUIPPED WITH OPTIONAL FLOW CONTROL FEATURES. IF THE PORT IS NOT IN USE ENSURE SQUARE HEAD PIPE PLUG REMAINS TIGHTENED.
4. REFER TO THE SYSTEM PIPING DIAGRAM FOR COMPLETE SYSTEM HYDRAULIC CONNECTIONS.
5. BLEEDING AIR FROM THE RESERVOIR IS DONE THRU THE BLEED FITTING (ITEM 19). ENSURE THE BLEED FITTING IS TIGHT UPON INSTALLATION OF THE RESERVOIR.
6. ALLOW 24" (610mm) CLEARANCE FROM BASE OF RESERVOIR FOR REMOVAL AND SERVICE OF THE SUCTION STRAINER AND RETURN LINE DEFUSER.



**OVERALL DIMENSIONS FOR TA-3 RESERVOIR ASSY WITH NO.1 INTERFACE**

Wagner Engineering Ltd.  
136 Riverside Dr.  
North Vancouver, BC  
Canada V7H 1T6  
Tel: (604) 888-1111  
www.wagnerengineering.ca Fax: (604) 888-0334

WAGNER

DRAWN BY: M.L.S.  
SCALE: 1/4" = 1"  
DATE: JAN. 1995  
REV. NO.:

CHECKED BY: F.J.P.

DRAWING NO. **C-2752**

REV. **A**