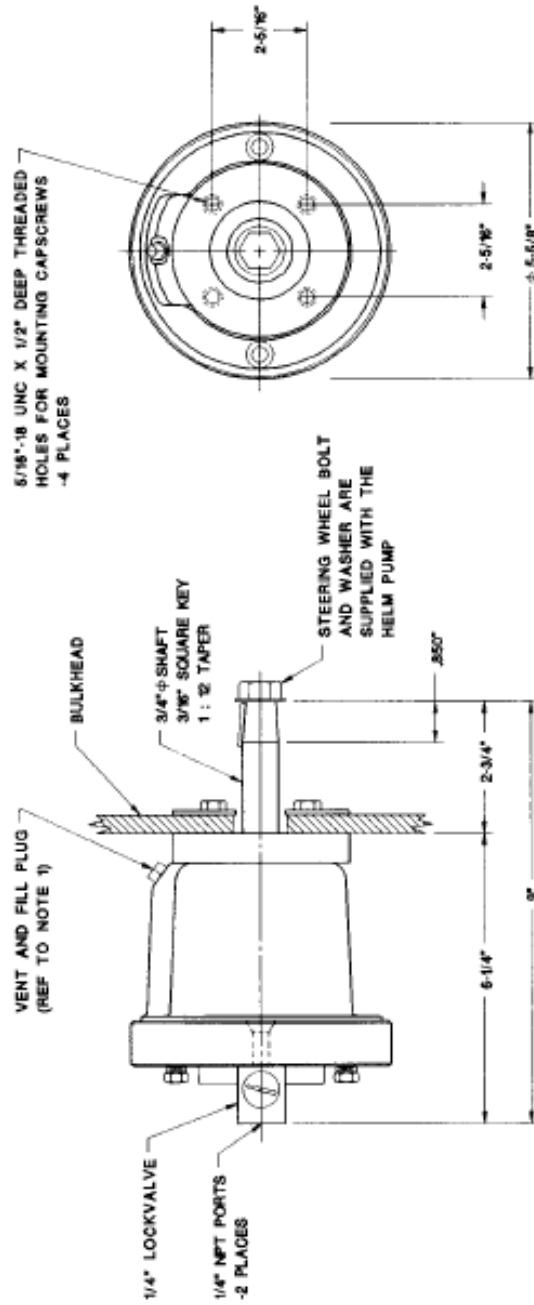


701 REAR MOUNT HELM PUMP



702 FACE MOUNT HELM PUMP

NOTES:

- 1.) THE VENT AND FILL PLUG LOCATED AT THE HIGHEST POINT IN THE HYDRAULIC SYSTEM MUST HAVE A 1/32" VENT HOLE THROUGH THE TOP OF THE PLUG. THIS HOLE SHOULD BE PLUGGED IF A HEADER TANK LOCATED ABOVE THE HIGHEST HELM PUMP IS USED.
- 2.) THE 702 HELM PUMP MOUNTING SURFACE MUST BE FLUSH AND PARALLEL. TIGHTEN THE FOUR MOUNTING CAPSCREWS SEQUENTIALLY TO PREVENT DISTORTION OF THE PUMP.
- 3.) KEEP WORKING CONDITIONS AS CLEAN AS POSSIBLE. CONTAMINATION OF ANY FORM MUST BE PREVENTED FROM ENTERING THE SYSTEM. THE COMPLETE SYSTEM MUST BE THOROUGHLY FLUSHED BEFORE INSTALLING PUMP.
- 4.) 3/8" O.D. STEEL HYDRAULIC TUBING RATED FOR A WORKING PRESSURE OF 1000 PSI (MIN) IS RECOMMENDED. INSTALL THE HYDRAULIC TUBING WITH A GRADUAL RISE FORWARD TO THE LOCKVALVE PORTS, AVOIDING ANY GOOSENECKS OR DIPS IN THE PLUMBING. THIS WILL ENSURE THE SYSTEM IS SELF VENTING.
- 5.) CHECK THE OIL LEVEL AT REGULAR INTERVALS AND FILL IF NECESSARY. REFER TO THE INSTALLATION MANUAL FOR RECOMMENDED HYDRAULIC OILS. DO NOT USE BRAKE FLUID.
- 6.) FOR MULTIPLE HELM PUMP SYSTEMS, FILL ALL PUMP HOUSINGS STARTING AT THE LOWEST STATION AND PROGRESSING TO THE HIGHEST STATION. PLUG EACH HELM PUMP HOUSING TIGHTLY AFTER IT IS FULL OF OIL. A VENT LINE CONNECTING THE HELM PUMPS WILL BE REQUIRED. THE HIGHEST STATION WILL HAVE TO BE VENTED TO ATMOSPHERE (REFER TO NOTE 1).

HELM PUMP DISPLACEMENT: 1.95 IN³/REV

701 HELM PUMP PART NUMBER: 300-0007

702 HELM PUMP PART NUMBER: 300-0041

WAGNER MODELS 701 AND 702 HELM PUMP
OVERALL DIMENSIONS



Wagner Engineering Ltd.
135 Riverside Dr.
North Vancouver, BC
Canada V7H 1T6
Tel. (604) 988-1111
www.wagnerengineering.ca Fax (604) 988-0334

DRAWN BY: L.A.M.

SCALE: 1/2" = 1"

DATE: AUG. 1997

REF NO.:

CHECKED BY: M.L.G.

DRAWING NO.

REV.

C-3-316