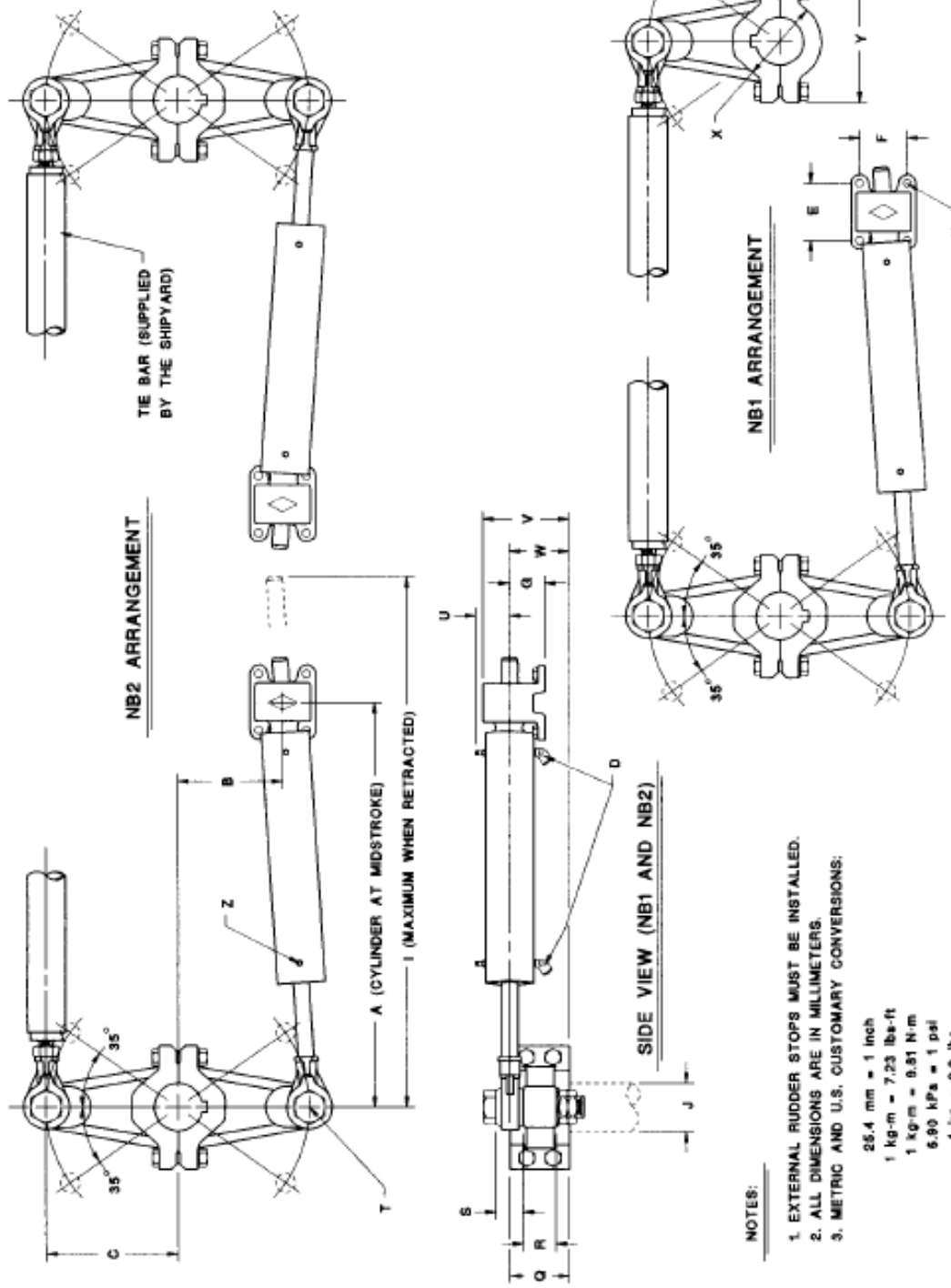


STEERING TYPE	A	B	C	D	E	F	G	H	I	J	L	M	N	O	P	Q	R	S	T	U	V	W	X	Y				
NB1-263	405	85	104	1/4"NPT	82	50	44	10	3/8"	490	28	48	127	40	X	120	618	B1	3.0	55	35	22	18	40	89	53	80	130
NB2-128	405	85	104	1/4"NPT	82	50	44	10	3/8"	490	28	48	127	40	X	120	1240	B2	3.8	55	35	22	18	40	89	53	80	130
NB1-100	509	135	165	1/4"NPT	92	50	44	10	3/8"	665	33	56	200	40	X	190	981	B1	4.7	64	42	22	18	40	96	51	90	145
NB2-200	509	135	165	1/4"NPT	92	50	44	10	3/8"	665	33	56	200	40	X	190	1980	B2	6.1	64	42	22	18	40	96	51	90	145
NB1-160	541	135	165	3/8"NPT	90	62	60	12	1/2"	685	40	65	314	50	X	190	1570	B2	4.8	75	40	28	24	45	113	69	110	160
NB2-320	541	135	165	3/8"NPT	90	62	60	12	1/2"	685	40	65	314	50	X	190	3140	B3	6.0	75	40	28	24	45	113	69	110	160
NB1-250	705	214	261	3/8"NPT	90	62	60	12	1/2"	960	45	75	495	50	X	300	2450	B3	4.8	88	52	25	24	45	125	81	130	200
NB2-500	705	214	261	3/8"NPT	90	62	60	12	1/2"	960	45	75	990	50	X	300	4910	B3	9.5	88	52	25	24	45	125	81	130	200
NB1-400	844	135	165	1/2"NPT	115	95	70	16	5/8"	785	53	88	802	80	X	190	3920	B3	7.7	101	55	42.5	36	60	150	97	150	235
NB2-800	844	135	165	1/2"NPT	115	95	70	16	5/8"	785	53	88	1604	80	X	160	7850	B4	9.9	101	55	42.5	36	60	150	97	150	235
NB1-850	808	214	261	1/2"NPT	115	95	70	16	5/8"	1060	62	100	1267	80	X	300	5180	B4	7.8	117	65	42.5	36	60	163	110	170	245
NB2-1260	808	214	261	1/2"NPT	115	95	70	16	5/8"	1060	62	100	2534	80	X	300	12360	B4	15.6	117	65	42.5	36	60	163	110	170	245
NB2-1600	930	253	318	1/2"NPT	115	95	70	16	5/8"	1246	62	100	3226	80	X	382	15690	B4	19.0	117	65	42.5	36	60	163	110	170	245

LTR	DESCRIPTION
D	HOSE CONNECTION THREAD SIZE
H	REQUIRED MOUNTING CAPSCREW SIZE
I	MAXIMUM LENGTH IN HARDOVER POSITION
J	RUDDER STOCK DIAMETER
L	TOTAL CYLINDER DISPLACEMENT (cm <sup>3</sup> )
M	CYLINDER BORE AND STROKE (mm)
N	TORQUE DEVELOPED (N-m)
O	WAGNER HELM PUMP MODEL
P	WHEEL TURNS HARDOVER TO HARDOVER
Q	TILLER HUB HEIGHT
R	TILLER EYE THICKNESS
S	ROD END SPHERICAL SWIVEL THICKNESS
T	TILLER BOLT DIAMETER
V	OVERALL HEIGHT
X	TILLER HUB DIAMETER
Y	TILLER HUB OVERALL LENGTH
Z	BLEED FITTING



(TWIN RUDDER ARRANGEMENTS)

**TYPE-N OVERALL DIMENSIONS (2 X 35°) FOR NB1 & NB2 ARRANGEMENTS**

Wagner Engineering Ltd.  
135 Riverside Dr.  
North Vancouver, BC  
Canada V7H 1T6  
Tel: (604) 888-1111  
www.wagnerengineering.ca Fax: (604) 888-0334

WAGNER

DRAWN BY: M.L.G.  
SCALE: N.T.S.  
DATE: JUNE, 1994  
REF NO.: \_\_\_\_\_

CHECKED BY: F.J.P.

DRAWING NO. **C-3-740**

REV. **A**

- NOTES:
- EXTERNAL RUDDER STOPS MUST BE INSTALLED.
  - ALL DIMENSIONS ARE IN MILLIMETERS.
  - METRIC AND U.S. CUSTOMARY CONVERSIONS:  
25.4 mm = 1 inch  
1 kg-m = 7.23 lbs-ft  
1 kg-m = 9.81 N-m  
6.90 kPa = 1 psi  
1 kg = 2.2 lbs