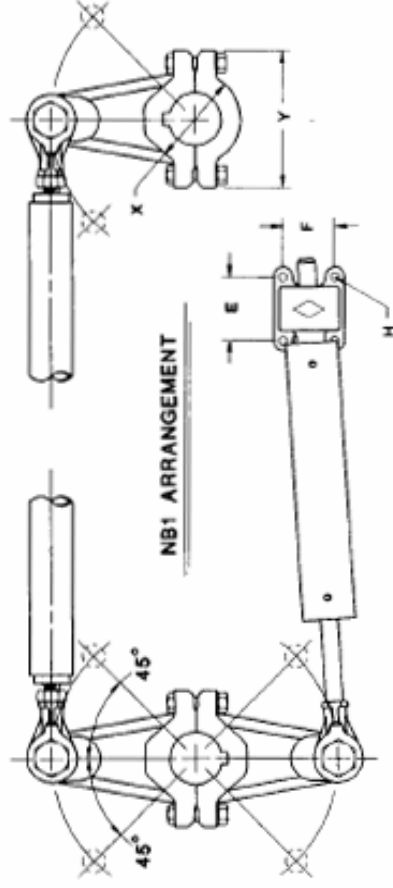
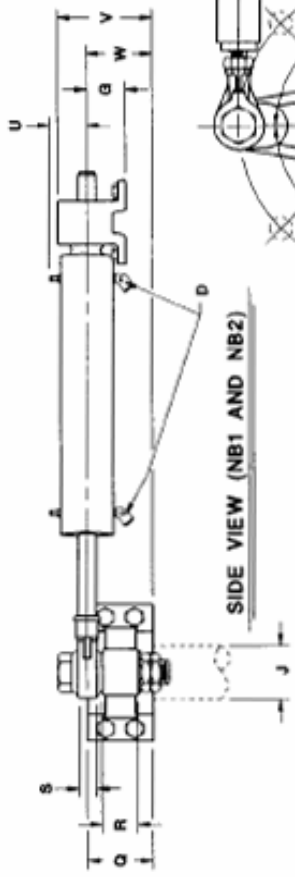
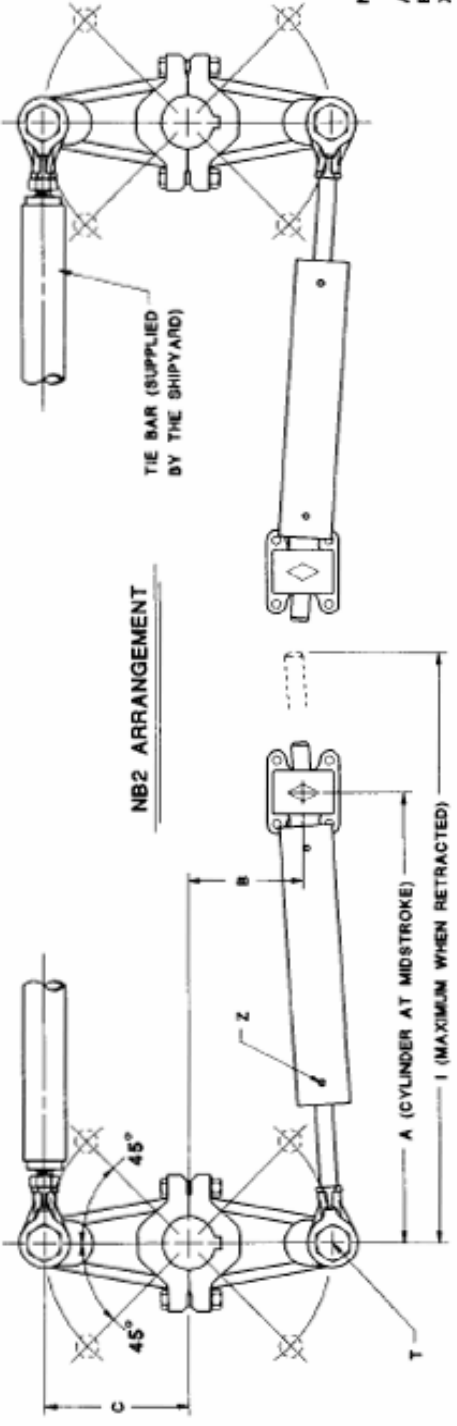


STEERING TYPE	A	B	C	D	E	F	G	H	I	J	L	M	N	O	P	Q	R	S	T	U	V	W	X	Y				
NB1-44	404	60	84"	1/4"NPT	82	50	44	10	3/8"	485	28	48	127	40	X	120	431	B1	3.0	55	35	22	16	40	89	53	80	130
NB2-88	404	60	84"	1/4"NPT	82	50	44	10	3/8"	485	28	48	254	40	X	120	883	B2	3.8	55	35	22	16	40	89	53	80	130
NB1-70	508	95	133"	1/4"NPT	82	50	44	10	3/8"	660	33	56	200	40	X	190	686	B1	4.7	64	42	22	16	40	96	61	90	145
NB2-140	508	95	133"	1/4"NPT	82	50	44	10	3/8"	660	33	56	400	40	X	190	1373	B2	6.1	64	42	22	16	40	96	61	90	145
NB1-112	540	95	159	3/8"NPT	90	62	60	12	1/2"	685	40	66	314	50	X	190	1098	B2	4.8	75	40	26	24	45	113	69	110	150
NB2-224	540	95	159	3/8"NPT	90	62	60	12	1/2"	685	40	66	628	50	X	190	2197	B3	6.0	75	40	26	24	45	113	69	110	150
NB1-176	704	150	211	3/8"NPT	90	62	60	12	1/2"	960	45	75	485	50	X	300	1716	B3	4.8	86	52	26	24	45	125	81	130	200
NB2-350	704	150	211	3/8"NPT	90	62	60	12	1/2"	960	45	75	990	50	X	300	3433	B3	9.5	86	52	26	24	45	125	81	130	200
NB1-290	643	95	133"	1/2"NPT	115	65	70	16	5/8"	785	53	88	802	80	X	190	2745	B4	7.7	101	55	42.5	36	60	150	97	150	235
NB2-560	643	95	133"	1/2"NPT	115	65	70	16	5/8"	785	53	88	1604	80	X	190	5493	B4	9.9	101	55	42.5	36	60	150	97	150	235
NB1-441	807	150	211	1/2"NPT	115	65	70	16	5/8"	1060	62	100	1287	80	X	300	4328	B4	7.8	117	65	42.5	36	60	163	110	170	245
NB2-882	807	150	211	1/2"NPT	115	65	70	16	5/8"	1060	62	100	2534	80	X	300	8552	B4	15.6	117	65	42.5	36	60	163	110	170	245
NB2-1128	929	185	261	1/2"NPT	115	65	70	16	5/8"	1246	62	100	3226	80	X	362	11036	B4	19.9	117	65	42.5	36	60	163	110	170	245

LTR	DESCRIPTION
D	HOSE CONNECTION THREAD SIZE
H	REQUIRED MOUNTING CAPSCREW SIZE
I	MAXIMUM LENGTH IN HARDOVER POSITION
J	RUDDER STOCK DIAMETER
L	TOTAL CYLINDER DISPLACEMENT (cm ³)
M	CYLINDER BORE AND STROKE (mm)
N	TORQUE DEVELOPED (N-m)
O	WAGNER HELM PUMP MODEL
P	WHEEL TURNS HARDOVER TO HARDOVER
Q	TILLER HUB HEIGHT
R	TILLER EYE THICKNESS
S	ROD EYE THICKNESS
T	TILLER BOLT DIAMETER
V	OVERALL HEIGHT
X	TILLER HUB DIAMETER
Y	TILLER HUB OVERALL LENGTH
Z	BLEED FITTING



STEERING SYSTEM CODING

N TYPE CYLINDER MODEL
 A - SINGLE RUDDER
 B - TWIN RUDDER
 X - IF UNKNOWN
 1 - ONE CYLINDER
 2 - TWO CYLINDERS
 TORQUE IN kg-m
 DEVELOPED AT 6895 kPa (1000 PSI)

(TWIN RUDDER ARRANGEMENTS)

TYPE-N OVERALL DIMENSIONS (2 X 45°) FOR NB1 & NB2 ARRANGEMENTS

Wagner Engineering Ltd.
 135 Riverside Dr.
 North Vancouver, BC
 Canada V7H 1T8
 Tel. (604) 988-1111
 Fax (604) 886-0334
 www.wagnerengineering.ca

DRAWN BY: M.L.G.
 SCALE: N.T.S.
 DATE: JUNE, 1994
 CHECKED BY: F.J.P.
 REF NO.:
 DRAWING NO. C-3-742
 REV. A

- NOTES:
- EXTERNAL RUDDER STOPS MUST BE INSTALLED.
 - ALL DIMENSIONS ARE IN MILLIMETERS.
 - (°) - NOT A WAGNER STANDARD TILLER.
 - METRIC AND U.S. CUSTOMARY CONVERSIONS:
 25.4 mm = 1 inch
 1 kg-m = 7.23 lbs-ft
 1 kg-m = 9.81 N-m
 6.90 kPa = 1 psi
 1 kg = 2.2 lbs