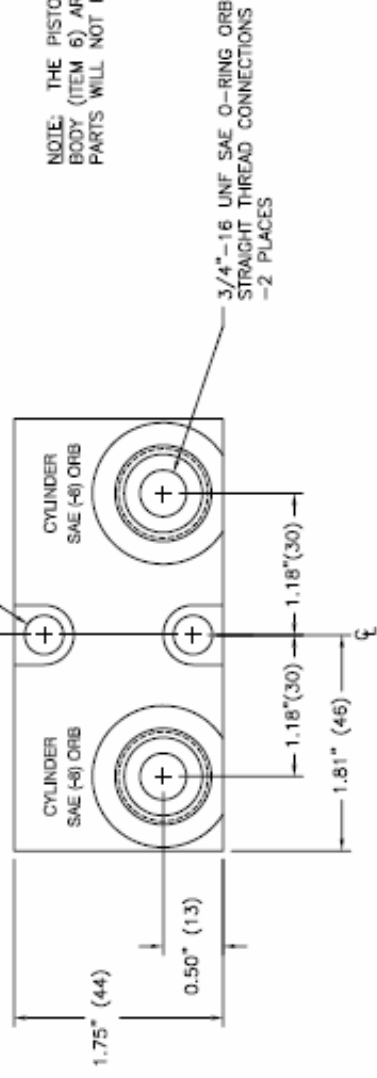
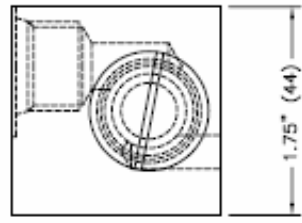
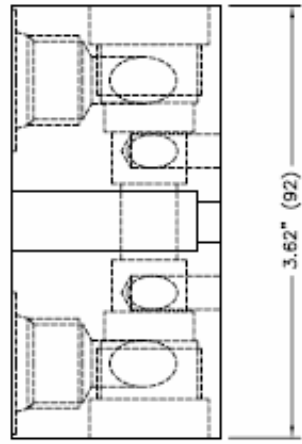
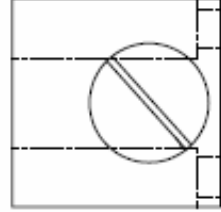


ITEM	QTY	PART NO:	DESCRIPTION
1	2	11-106020	O-RING
2	2	31-100003	SPRING
3	2	21-300001	CHROME ALLOY BALL
4	2	11-106016	O-RING
5	1	410-0001	PISTON SUB-ASSEMBLY
6	1	420-0664	LOCKVALVE BODY
7	2	420-0140	BALL SEAT
8	2	420-0655	BALL CAGE

CLEARANCE HOLE FOR 5/16" MOUNTING CAPSCREWS
-2 PLACES



NOTE: THE PISTON SUB-ASSEMBLY (ITEM 5) AND THE LOCKVALVE BODY (ITEM 6) ARE SOLD AS MATCHED PARTS ONLY. EACH OF THESE PARTS WILL NOT BE SOLD INDIVIDUALLY.



WAGNER ASSEMBLY PART NUMBER: 400-0200

**3/8" MANIFOLD LOCKVALVE
ASSEMBLY AND OVERALL DIMENSIONS**



Wagner Engineering Ltd.
135 Riverside Dr.
North Vancouver, BC
Canada V7H 1T6
Tel. (604) 888-1111
www.wagnerengineering.ca Fax (604) 888-0334

DRAWN BY: B.B.G.	CHECKED BY: M.L.G.
SCALE: 1" = 1-1/4"	DRAWING NO.
DATE: JANUARY, 2003	REV.
REF NO.:	C-6-446